

TEL: 91-11-24632950 Extn: 2219/2233 AFS: VIDDYXAX FAX: 91-11-24615508 E_mail:- gmais@aai.aero	INDIA AERONAUTICAL INFORMATION SERVICES AIRPORTS AUTHORITY OF INDIA RAJIV GANDHI BHAVAN SAFDARJUNG AIRPORT NEW DELHI – 110003	47 / 2009
		24 December 2009

File No. AAI/ATM/AIS/ 09-09/ 2009

Aurangabad VOR is relocated at 19 51 39.91 N 075 24 18.92 E. Accordingly VOR Procedure Rwy 27 is amended. This supplement is issued for information, guidance and necessary action.



V. P. AGRAWAL
 CHAIRMAN
 AIRPORTS AUTHORITY OF INDIA

 [EFFECTIVE DATE: 11 February 2010]

**VOR PROCEDURE RWY 27 – AURANGABAD AIRPORT
 (DME Required)**

1 VOR Procedure RWY 27 (Cat A, B & C) – Aurangabad Airport

Note: All radials and distances are from VOR (116.3 AAU).

2 Holding Procedure (VOR 116.3 AAU) One-minute right hand pattern inbound track 109 deg M. Minimum holding altitude 4600 ft.

3 Procedure

3.1 VOR DME Procedure Proceed outbound on track 098 Deg M (R-098) for Cat A/B and on track 109 Deg M (R-109) for Cat C descending to 3800 ft. At 8D commence based turn left to established final approach track 265 Deg M. At FAF 6.1D descend to MDA/H to cross step down fix 4.5D at 3290 feet.

3.2 VOR DME ARC/DR Track Procedure

3.2.1 From ATS Route W75 (R-009) After passing IAF 14D on radial 009 turn left to fly DME ARC of radius 12D descending to 4600 feet. Crossing lead radial R-075 turns right to establish final approach track 265 Deg M descending to 3800 ft. At FAF 6.1D descend to MDA/H to cross step down fix 4.5D at 3290 feet.

3.2.2 From ATS Route G450
(R-070)

Speed restricted 180 KT IAS maximum.

After passing IAF 16D on radial 070 turn left to fly DR track 220 Deg M to establish final approach track 265 Deg M descending to 3800 ft. At FAF 6.1D descend to MDA/H to cross step down fix 4.5D at 3290 feet.

3.2.3 From ATS Route L301
(R-104)

After passing IAF at 14D on R-104 turn right to fly DME ARC of radius 12D descending to 4600 feet. Crossing lead radial R-095 turn left to establish final approach track 265 Deg M descending to 3800 feet. At FAF 6.1D descend to MDA/H to cross step down fix 4.5D at 3290 feet.

NOTE : ATC may clear within aerodrome control zone an aircraft established on any radial other than the promulgated radial to join 12 DME ARC procedure at or above 4600 feet.

4	IF	12D
	Altitude at IF	4600 Feet
	FAF	6.1D
	Altitude over FAF	3800 feet
	Step down Fix	4.5 D
	Altitude at step down fix	3290 feet
	Descent Gradient	5.2%

5	OCA	OCA Straight-In
		Cat A/B/C : 2310 feet
		Visual Circling
		Cat A/B : 2890 feet
		Cat C : 3330 feet

6 Distance (DME) / Altitude information:-

Distance (DME)	6.1D	5D	4.5D (step down)	4D	3D	2D
Altitude (ft)	3800	3450	3290	3130	2820	2500

7 Ground Speed and Rate of Descent information:

Ground Speed (Kt)	80	100	120	140	160
Rate of Descent (Ft/min)	420	525	630	735	845

8 MAPt : VOR (116.3 AAU)

9 Missed Approach Procedure : Climb straight ahead to 4000 ft, then turn right to VOR to join holding at 4600 ft or as instructed by ATC.

10 MSA : NE, SE & SW : 4300 feet
 NW : 4600 feet
 (upto 25NM)

11. Aerodrome operating minima

Aerodrome Operating Minima	Category A		Category B		Category C	
	ALS	ALS OUT	ALS	ALS OUT	ALS	ALS OUT
Normal Minima		2400		2400		2800
Restricted Minima		2800		2800		3200
Normal Circling Minima		3600		3600		5000
Restricted Circling Minima		3600		3600		5000

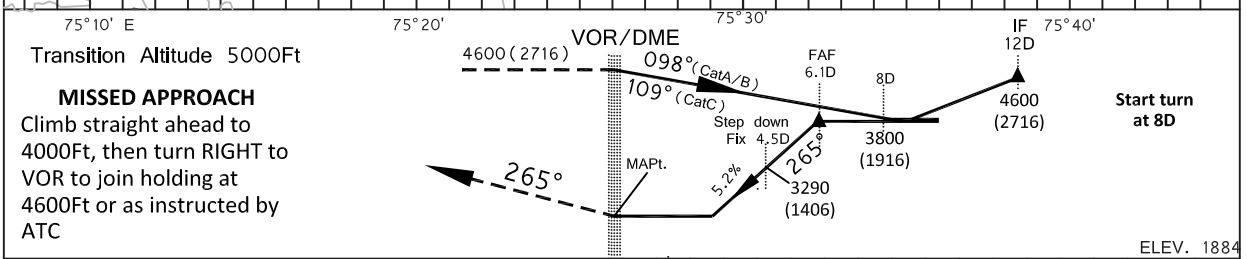
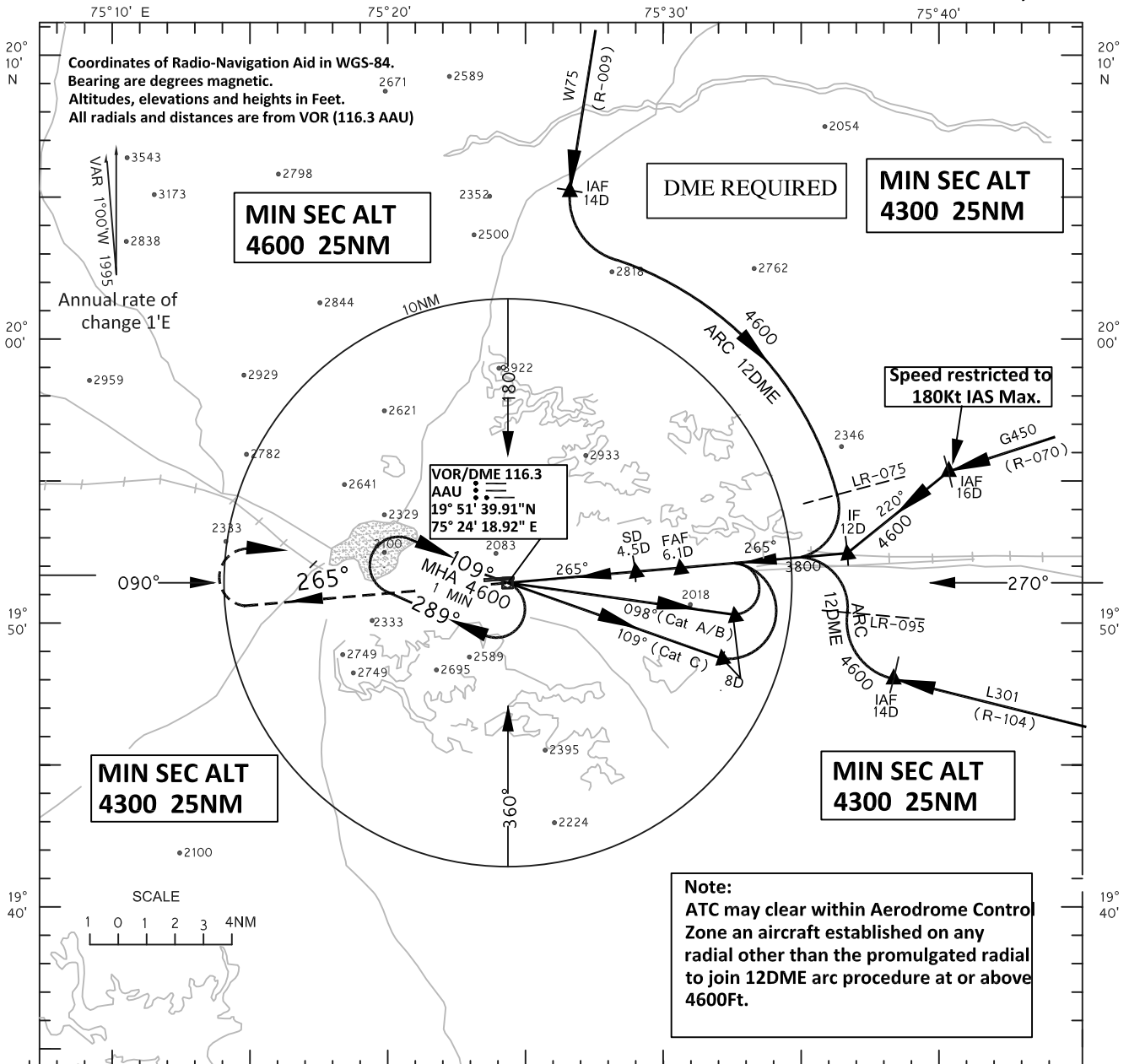
Cancellation- AIP Supplement No. 13/2009

INSTRUMENT APPROACH CHART

Aerodrome Elev. 1911Ft
Height related to:
THR RWY27-Elev. 1884Ft

APP 122.3
TWR 122.3

AURANGABAD
INDIA
VOR RWY 27
Cat A, B & C



O C A		Distance / Altitude information								
CATEGORY OF AIRCRAFT	A/B	C	Distance (NM)	6.1D	5D	4.5D SD Fix	4D	3D	2D	
STRAIGHT-IN	2310	2310	3800	3450	3290	3130	2820	2500		
CIRCLING	2890	3330	Rate of Descent /Ground speed information							
Ground speed (Kt)						80	100	120	140	160
Rate of descent (Ft/min)						420	525	630	735	845
AERODROME OPERATING MINIMA		CATEGORY A		CATEGORY B		CATEGORY C				
	ALS	ALS OUT	ALS	ALS OUT	ALS	ALS OUT				
NORMAL MINIMA		2400		2400		2800				
RESTRICTED MINIMA		2800		2800		3200				
NORMAL CIRCLING MINIMA		3600		3600		5000				
RESTRICTED CIRCLING MINIMA		3600		3600		5000				

DRG. NO. AAI/10-IALC/09/01.12.09

Cancellation 13/2009