

TEL: 91-11-24632950 Extn: 2219/2233 AFS: VIDDYXAX FAX: 91-11-24615508 E_mail:- gmais@aai.aero	INDIA AERONAUTICAL INFORMATION SERVICES AIRPORTS AUTHORITY OF INDIA RAJIV GANDHI BHAVAN SAFDARJUNG AIRPORT NEW DELHI – 110003	10/ 2009
		29 th January 2009

File No. AAI/ATM/AIS/ 09-09/ 2009

Following supplement is issued for information, guidance and necessary action.



V.P. AGRAWAL
 CHAIRMAN
 AIRPORTS AUTHORITY OF INDIA

[Effective Date - 12 March 2009]

SUBJECT: ADDITION OF DME ARC/DR TRACK PROCEDURE IN ILS PROCEDURE
RWY 31 – RANCHI AIRPORT

This supplement is issued to add DME ARC/DR Track Procedure from ATS route W73(R-123) and W106(R-347) in the existing ILS Procedure Rwy 31 of Ranchi Airport.

- | | | |
|----|----------------------------------------------------|----------------------------------------------------------------------------------------------------------------------------------------------------------------------------------------------------------------------------------------------------|
| 1. | Procedure from Route W73(R-123) | After passing IAF 14 DME on radial R-123 turn left on DR track 267 deg M to intercept Localizer(110.5 IRAN) inbound track 312 deg M descending to 4600 ft. At 11 DME descend to 3700 ft. Descend on Glide path to DA/H. |
| 2. | Procedure from Route W106(R-347) | After passing IAF 13 DME on radial R-347 turn left to fly 11 DME ARC descending to 4600 ft. Crossing lead radial R-121 turn right to intercept Localizer(110.5 IRAN) inbound track 312 deg M descending to 3700 ft. Descend on Glide path to DA/H. |
| 3. | IF
Altitude over IF
FAP
Altitude over FAP | 11 D (VOR DME)
4600 ft
5.1 D (ILS DME)
3700 ft |

Revised chart of ILS Procedure Rwy 31 is enclosed.

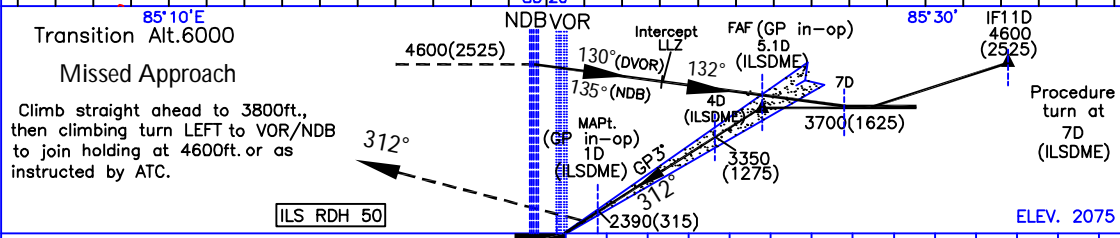
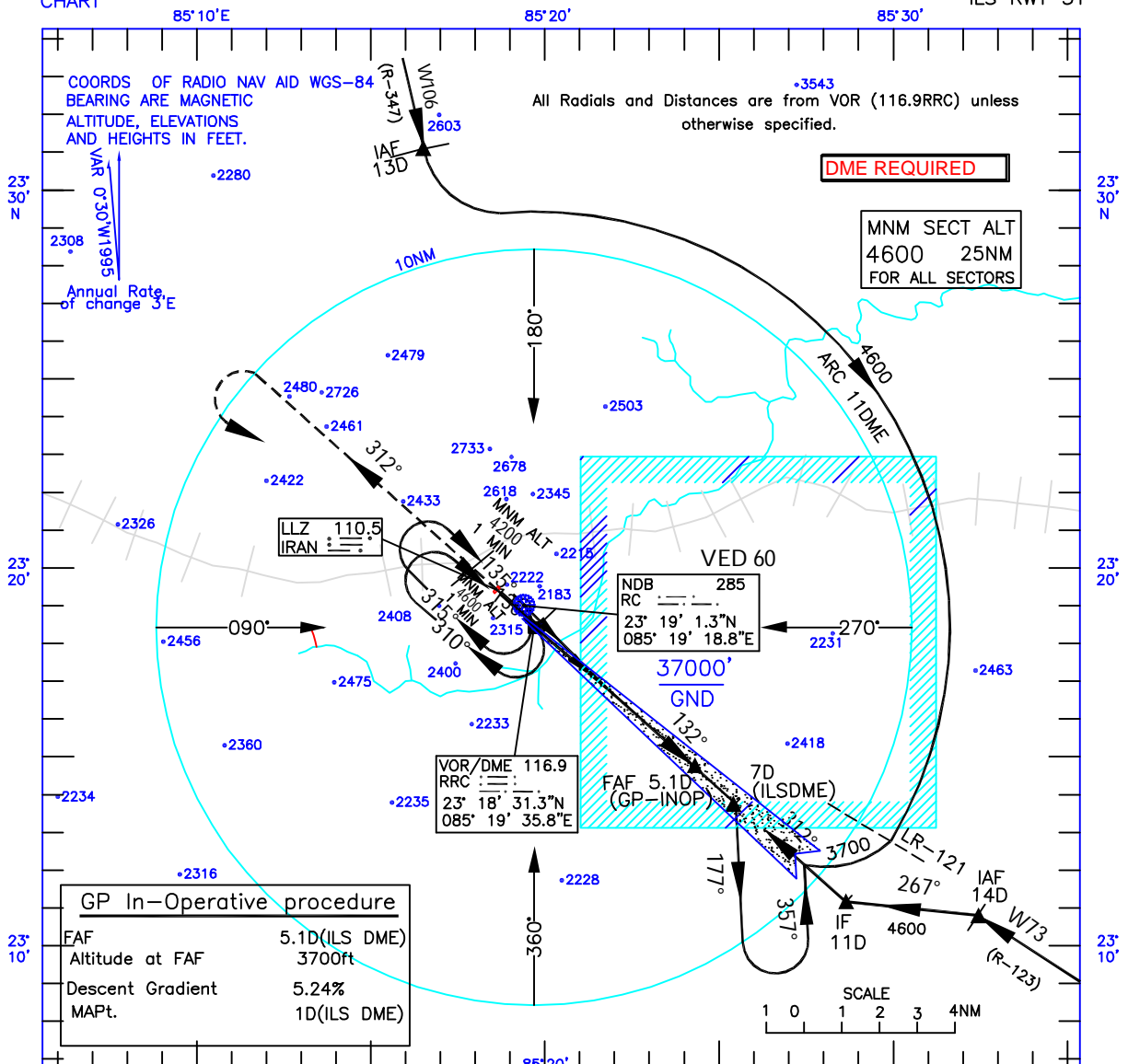
Cancellation- AIP India 6th Edition page no.AD2-VERC 8 dated 1ST Aug'2007.

**INSTRUMENT
APPROACH
CHART**

AERODROME ELEV. 2148ft.
HEIGHTS RELATED TO
THR RWY 31 ELEV.2075ft

TWR.122.3

**RANCHI
INDIA
ILS RWY 31**



Nautical miles from THR RWY 31

CATEGORY OF AIRCRAFT	O C A		Distance (ILSDME)/Altitude information for GP in-op Procedure:							
	A/B	C/D	5.1D	5D	4D	3D	2D			
STRAIGHT-IN	2290	2310	3700	3670	3350	3040	2720			
CIRCLING	2920	3140	Rate of Descent /Ground speed information for GP in-op Procedure:							
GP in-op Procedure:			Ground speed (kt.)		80	100	120	140	160	180
STRAIGHT-IN	2540	2540	Rate of descent (ft/min)		425	530	635	745	850	955
CIRCLING	2920	3140								

AERODROME OPERATING MINIMA	CATEGORY A		CATEGORY B		CATEGORY C		CATEGORY D	
	ALS	ALS OUT	ALS	ALS OUT	ALS	ALS OUT	ALS	ALS OUT
ILS								
NORMAL MINIMA		1200		1200		1200		1200
RESTRICTED MINIMA		1700		1700		1300		1300
GP in-op								
NORMAL MINIMA		2400		2400		2800		3600
RESTRICTED MINIMA		2800		2800		3200		4000
NORMAL CIRCLING MINIMA		3600		3600		5000		5000
RESTRICTED CIRCLING MINIMA		3600		3600		5000		5000

DRG. NO. AAI/24-IALC/99/14.01.09

Cancellation: AIP India 6th Edition page no. AD2-VERCB dated 1 Aug'2007.