

AIRAC AIP SUPPLEMENT

TEL: 91-11-24632950 Extn: 2219/2233 AFS: VIDDYXAX FAX: 91-11-24615508 E_mail:- gmais@aai.aero	AERONAUTICAL INFORMATION SERVICES AIRPORTS AUTHORITY OF INDIA RAJIV GANDHI BHAVAN SAFDARJUNG AIRPORT NEW DELHI – 110003	46/2008
		11th July 2008

File No. AAI/NAD/09-09/AIP-SUPP (Part-AIS)

Following supplement is issued for information, guidance and necessary action.



K. RAMALINGAM
CHAIRMAN

AIRPORTS AUTHORITY OF INDIA

(Effective date: 28th August 2008)**NDB CIRCLING PROCEDURE RWY 04/22 – GONDIA (Cat A/B/C)**

- | | | |
|-----|-----------------------------------|---|
| 1.1 | Holding Procedure
NDB (230 GN) | One minute right hand pattern,
inbound track 112 Deg M. Minimum
holding altitude 3800 feet. |
| 1.2 | Procedure
From NDB | Proceed outbound on track 121 Deg M
for 2.5 minutes for Cat A/B and on track
112 Deg M for 2 minutes for Cat C
descending to 2100 feet. Commence
level base turn right to establish final
approach track 315 Deg M. Descend
to MDA/H. |
| 1.3 | OCA | Circling
Cat A/B - 1520 feet
Cat C - 1620 feet |
| 1.4 | MAPt | NDB (230 GN) |
| 1.5 | Missed Approach
Procedure | Climb straight ahead to 2600 feet, turn
left to join NDB (230 GN) hold at 3800
feet or as instructed by ATC. |
| 1.6 | MSA | 3800 feet (All sectors) upto 25NM |

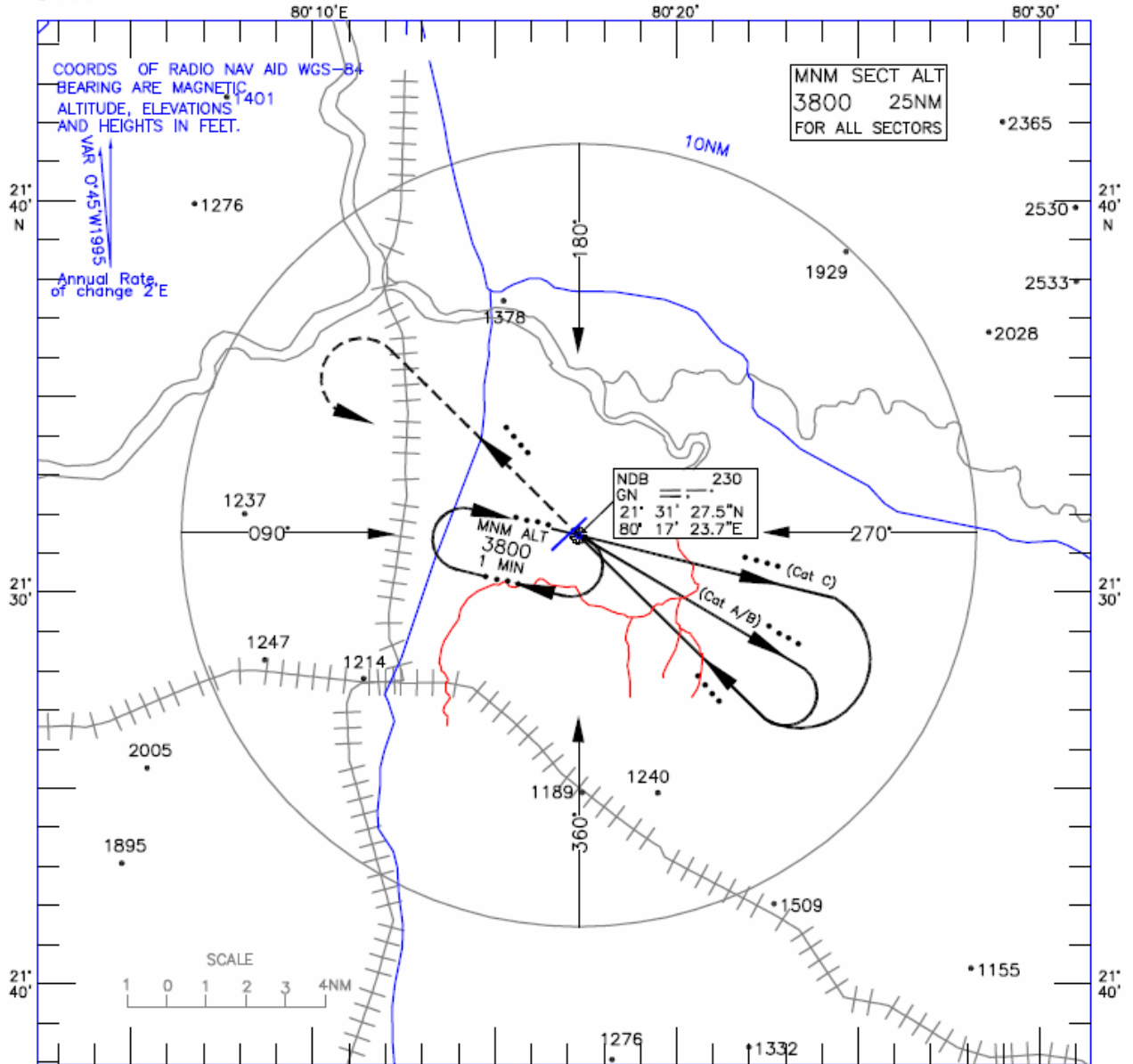
Cancel G Series NOTAM G0014/08

INSTRUMENT
APPROACH
CHART

HEIGHTS RELATED TO
AERODROME ELEV. 1021ft.

TWR.118.35

INDIA
NDB CIRCLING
80°30'



Transition Alt. 5000

.....

Climb straight ahead to 2600ft., turn LEFT to join NDB hold at 3800ft. or as instructed by ATC.

NDB

MAPT.

(Cat.C)

(Cat.A/B)

2100(1079)

Start turn at
2.5Min(Cat.A/B)
1.5Min(Cat.C)

ELEV. 1021

Nautical miles from THR RWY

O C A. (H)	
CATEGORY OF AIRCRAFT	A/B C
CIRCLING	1520(499) 1620(599)

DRG. NO. AAI/15-IALC/08/24.06.08 Compiled by Cartography Unit AIRPORTS AUTHORITY OF INDIA.
Cancellation : NOTAM G-0014/08