

TEL: 91-11-24632950 Extn: 2219/2233 AFS: VIDDYXAX FAX: 91-11-24615508 E_mail:- <a href="mailto:gmais@aai.aero">gmais@aai.aero</a>	INDIA AERONAUTICAL INFORMATION SERVICES AIRPORTS AUTHORITY OF INDIA RAJIV GANDHI BHAVAN SAFDARJUNG AIRPORT NEW DELHI – 110003	44/ 2009
		9 <sup>TH</sup> November 2009

File No. AAI/ATM/AIS/ 09-09/ 2009

Following Supplement is issued for information, guidance and necessary action.



V.P. AGRAWAL  
CHAIRMAN  
AIRPORTS AUTHORITY OF INDIA

[Effective Date: 14 January 2010]

**Subject: ILS RWY 22 (Cat A/B/C) – SURAT AIRPORT [DME REQUIRED]****(NOTE : All radials and distances are from VOR DME (112.2 SUR) unless otherwise specified)**

1	Holding Procedure:	
1.1	VOR (112.2 SUR)	One minute right hand pattern inbound track 067 <sup>0</sup> M Minimum holding altitude 2000 Ft.
2	ILS Procedure:	
2.1	From VOR	Proceed outbound VOR on track 056 <sup>0</sup> M for Cat A/B and on track 067 <sup>0</sup> M (R-067) for Cat C, descending to 1600 Ft. At 8D commence level base turn left to intercept LLZ (109.1 ISUT) inbound track 224 <sup>0</sup> M. Descend on GP to DA/H.
2.2	Via DME Arc	
2.2.1	From Songarh NDB (R-087)	After passing IAF 13D TURN RIGHT TO INTERCEPT DME Arc of radius 11D descending to 2000 ft. Crossing lead radial (R-055) turn left to intercept LLZ (109.1 ISUT) inbound track 224 <sup>0</sup> M descending to 1600 feet. Descend on GP to DA/H.

2.2.2	From DOTIP (R-153)	After passing IAF 13D turn right to intercept DME Arc of radius 11D descending to 2000 ft. Crossing lead radial (R-055) turn left to intercept LLZ (109.1 ISUT) inbound track 224 <sup>0</sup> M descending to 1600 feet. Descend on GP to DA/H.
2.2.3	From Bhavnagar (R-323)	After passing IAF 13D turn left to intercept DME Arc of radius 11D descending to 2000 ft. Crossing lead radial (R-034) turn right to intercept LLZ (109.1 ISUT) inbound track 224 <sup>0</sup> M descending to 1600 feet. Descend on GP to DA/H.
2.3	IF : 11D Altitude at IF : 2000 feet Altitude at 4D(ILS DME) : 1310 feet GP Angle : 3 Deg ILS RDH : 50 feet	
2.4	OCA	Straight-in : 260 Ft  Visual Circling: Cat A/B : 690 Ft Cat C : 920 Ft
3.	GP In-Operative Procedure	FAF : 4.9D (ILS DME) Altitude at FAF : 1600 feet Descent Gradient : 5.24% Mapt : 1D (ILS DME)
3.1	OCA	Straight-in : 500 Ft  Visual Circling: Cat A/B : 690 Ft Cat C : 920 Ft

3.2 Distance (ILS DME) / Altitude Information :

Distance (NM)	4.9D	4D	3D	2D
Altitude (Ft)	1600	1310	990	670

3.3 Rate of Descent / Ground Speed Information :

Ground Speed (Kt)	80	100	120	140	160
Rate of Descent (Ft/Min)	425	530	635	745	850

4.	Missed Approach Procedure	Climb straight ahead to 2000 feet, then turn left to join VOR (112.2 SUR) hold or as instructed by ATC.
5	MSA	2000 Ft (all sectors) up to 25NM

6. Aerodrome operating minima

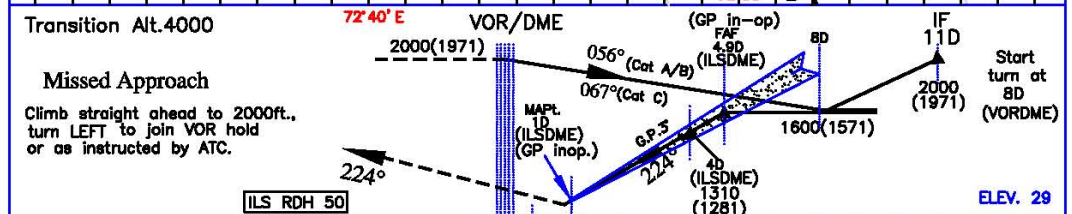
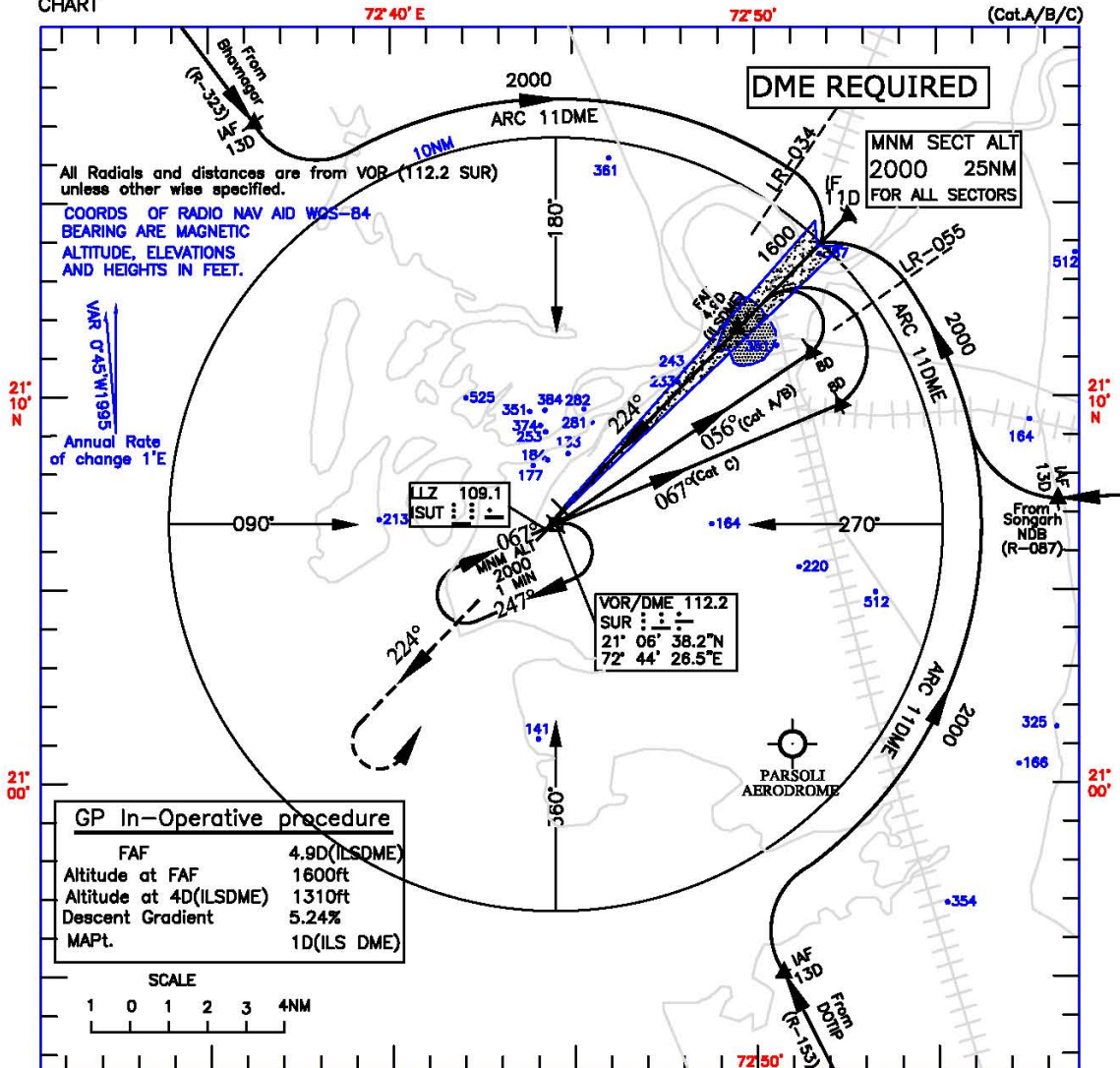
Aerodrome Operating Minima	Category A		Category B		Category C	
	ALS	ALS OUT	ALS	ALS OUT	ALS	ALS OUT
Normal Minima (ILS)	800	1200	800	1200	800	1200
Restricted Minima (ILS)	900	1300	900	1300	900	1300
Normal Minima (GP IN-OP)	2000	2400	2000	2400	2400	2800
Restricted Minima (GP IN-OP)	2400	2800	2400	2800	2800	3200
Normal Circling Minima	3600	3600	3600	3600	5000	5000
Restricted Circling Minima	3600	3600	3600	3600	5000	5000

INSTRUMENT  
APPROACH  
CHART

AERODROME ELEV. 20ft.  
HEIGHTS RELATED TO  
THR RWY 22 ELEV.29ft

TWR.118.55  
APP.118.55

SURAT  
INDIA  
ILS RWY 22  
(Cat.A/B/C)



CATEGORY OF AIRCRAFT	O C A		Distance (ILSDME)/Altitude information for GP In-op Procedure:					
	A/B	C	Distance(NM)	4.9D	4D	3D	2D	
STRAIGHT-IN	260	260	Altitude (ft.)	1600	1310	990	670	
CIRCLING	690	920	Rate of Descent /Ground speed information					
GP in-op Procedure:			Ground speed (kt.)	80	100	120	140	160
STRAIGHT-IN	500	500	Rate of descent (ft/min)	425	530	635	745	850
CIRCLING	690	920						

AERODROME OPERATING MINIMA	CATEGORY A		CATEGORY B		CATEGORY C	
	ALS	ALS OUT	ALS	ALS OUT	ALS	ALS OUT
STRAIGHT-IN (ILS)						
NORMAL MINIMA	800	1200	800	1200	800	1200
RESTRICTED MINIMA	900	1300	900	1300	900	1300
GP IN OP NORMAL MINIMA	2000	2400	2000	2400	2400	2800
RESTRICTED MINIMA	2400	2800	2400	2800	2800	3200
NORMAL CIRCLING MINIMA	3600	3600	3600	3600	5000	5000
RESTRICTED CIRCLING MINIMA	3600	3600	3600	3600	5000	5000

DRG. NO. AAJ/09-IALC/07/28.10.09